

S

1

25

2

S

3

P

4

C

5

L

6

N

7

R

8

12

9

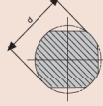
C

10

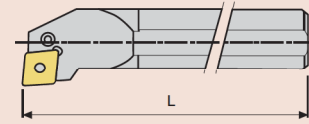
1 Takım Malzemesi / Type of Boring Bar

"A" Yekpare çelik gövde soğutma suyu kanallı / "A" Solid steel with coolant hole
 "E" Çelik başlıkla sert metal gövde ve soğutma suyu kanallı /
 "E" Carbide bar with fixed steel head and coolant hole
 "C" Karbür Şaft / "C" Carbide shank
 "S" Çelik Şaft / "S" Steel shank

2 Şaft Çapı / Shank Diameter

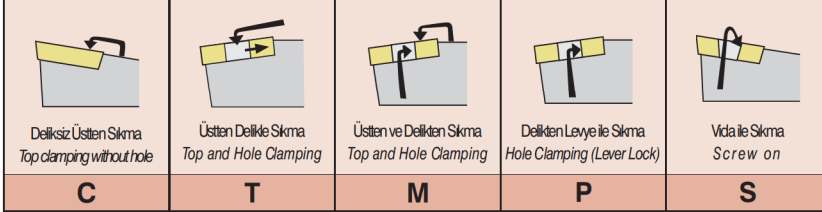


3 Şaft Boyu / Shank Length

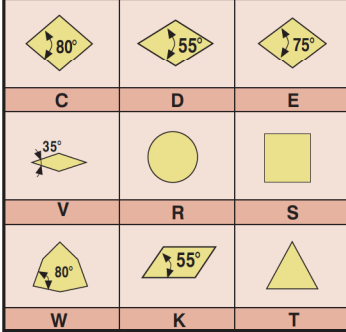


			(mm)
A - 32	H - 100	Q - 180	x-special
B - 40	J - 110	R - 200	
C - 50	K - 125	S - 250	
D - 60	L - 140	T - 300	
E - 70	M - 150	U - 350	
F - 80	N - 160	V - 400	
G - 90	P - 170	W - 450	

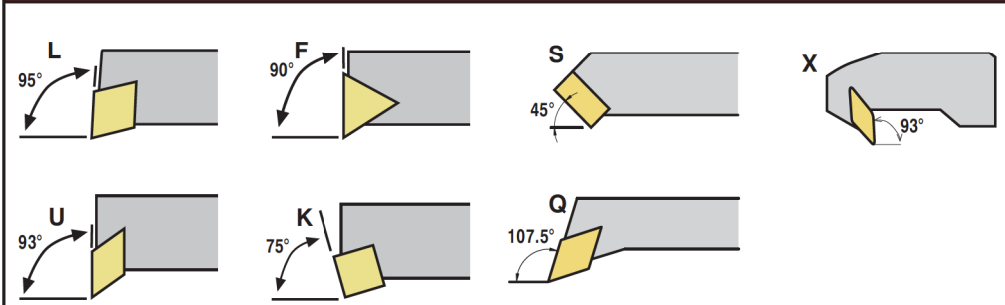
4 Sıkma Tipi / Method of Mounting of Insert



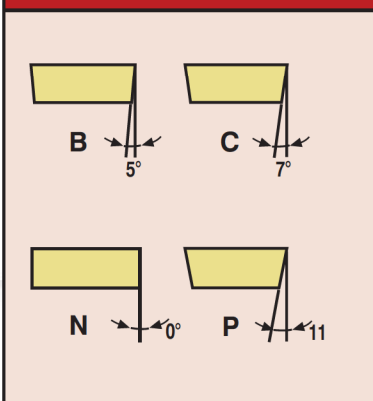
5 Uç Tipi / Insert Shape



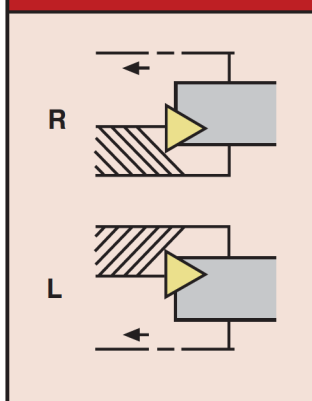
6 Yanaşma Açısı / Tool Holder Shape Bar Geometry



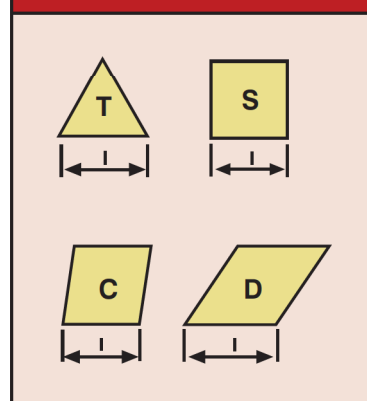
7 Serbest Uç Açısı / Insert Clearance Angle



8 Kesme Yönü / Cutting Direction



9 Kesme Kenar Uzunluğu / Cutting Edge Length



9 Baskı Pabucu / Wedge Clamp

